

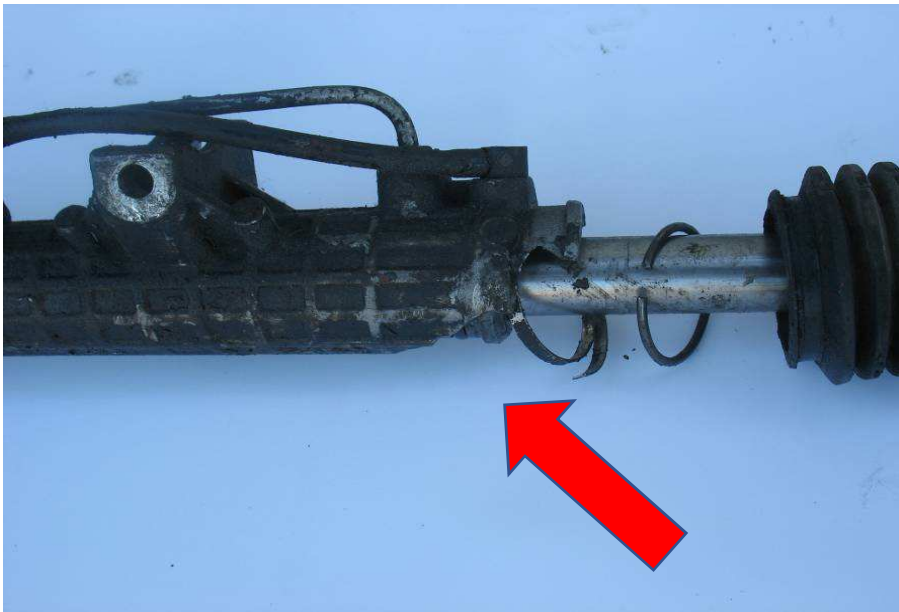


Old cores return policy for Power Steering Racks

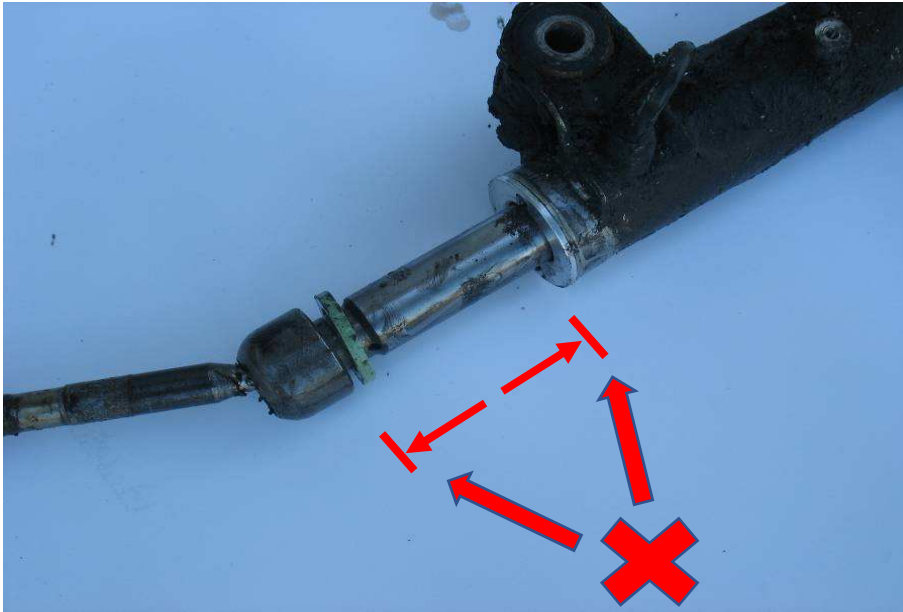
**We are going to accept all the incoming old cores,
that will comply with the following instructions :**



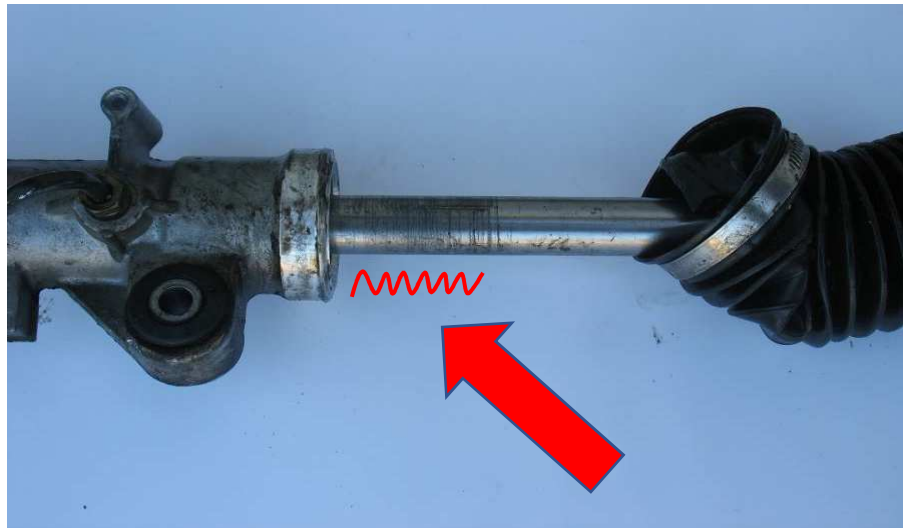
No broken fixing points on the body



No broken / cracked / bent body
(must be absolutely complete without damages)



No blocked flow (rack blocked)



No modified racks (i.e. filed inside)

EXAMPLE of an ORIGINAL RACK which we will ACCEPT :



OK

**General Ricambi will accept only ORIGINAL RACKS dismantled from the car, this means that the part must be original
We DO NOT ACCEPT : Chinese racks and racks from non-original brands which have been modified**

NOTE : if the original rack will also have the original rubber boots and the original metal clips, not opened and not previously checked, the old core will be automatically accepted by GR (customer's good faith will prevail)

EXAMPLES of STEERING RACKS which we will NOT ACCEPT though APPARENTLY good :



The red circle shows that the rack has been filed / eroded : in this case, the diameter is smaller than the original, and in this case we will not be able to use the original components / rubber seals because it has been modified.

NOTE : The REASON of this strict requirement is because we use ORIGINAL SEALS ONLY, for the remanufacturing process. A modified or rusty rack will therefore cause the reduction of the original rack diameter, with consequent oil leakage. For safety reasons, we refuse to employ other seals than the original ones.

EXAMPLES of STEERING RACKS which we will NOT ACCEPT, concernig RUST LEVEL :



NOT GOOD - Rusty rack



NOT GOOD - Rusty rack



NOT GOOD - Rusty rack



NOT GOOD - Rusty rack



NOT GOOD - Rusty rack



NOT GOOD - Rusty rack



NOT GOOD - Rusty rack

Packing rules :

- > It's **NOT** necessary to pack them into the original box
- > Racks could be packed "in a jumble", as shown in the photos below
- > It's **NOT** necessary to identify each rack with a label (ref. number, model of car etc.)
- > Kindly flush out the steering oil before transport to not dirty your / our storage places
- > The pallets of old cores which are returned to GR must be **STACKABLE**



GR GENERALRICAMBI S.p.A.
Made in Italy

Thank you for complying !